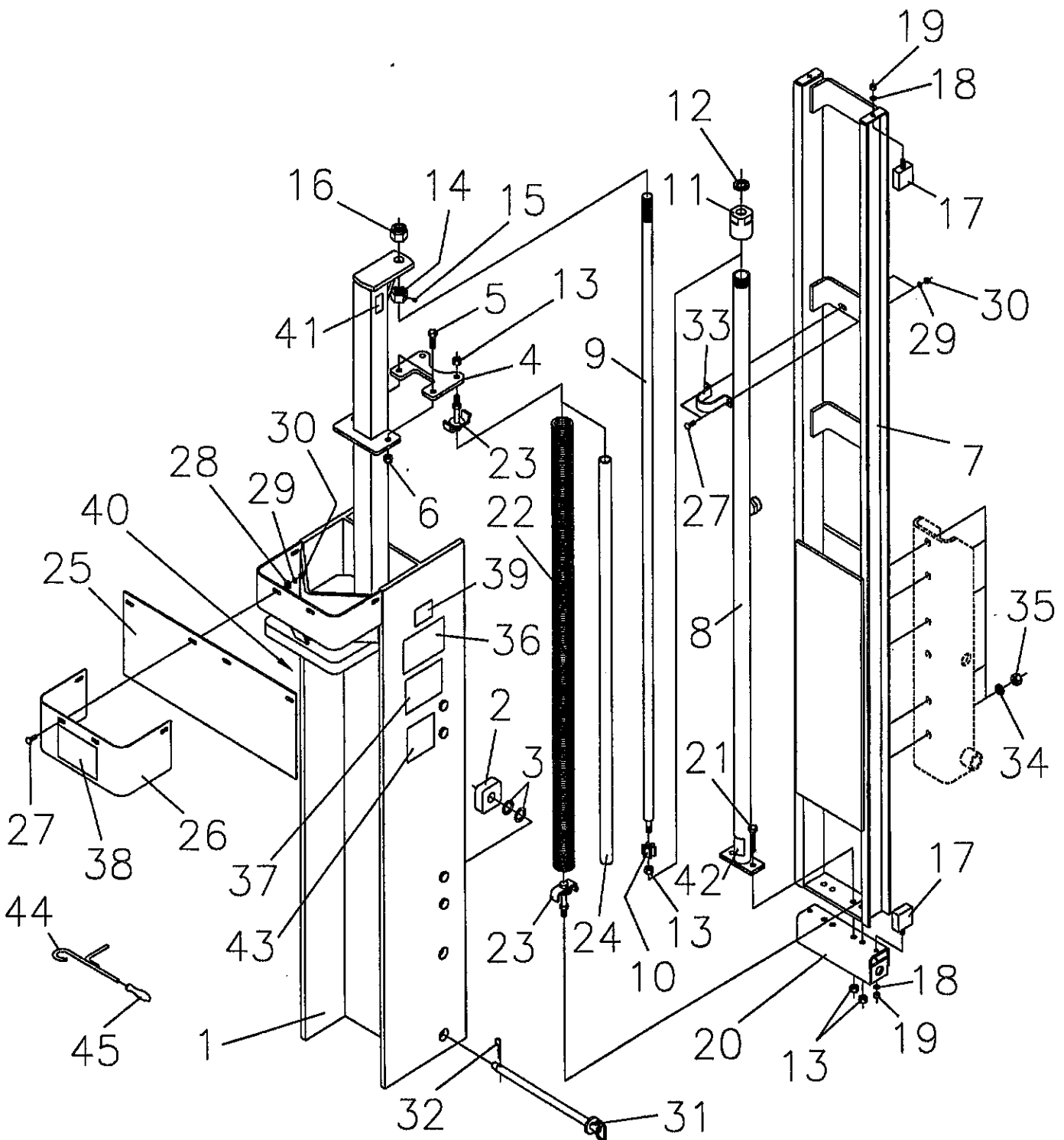


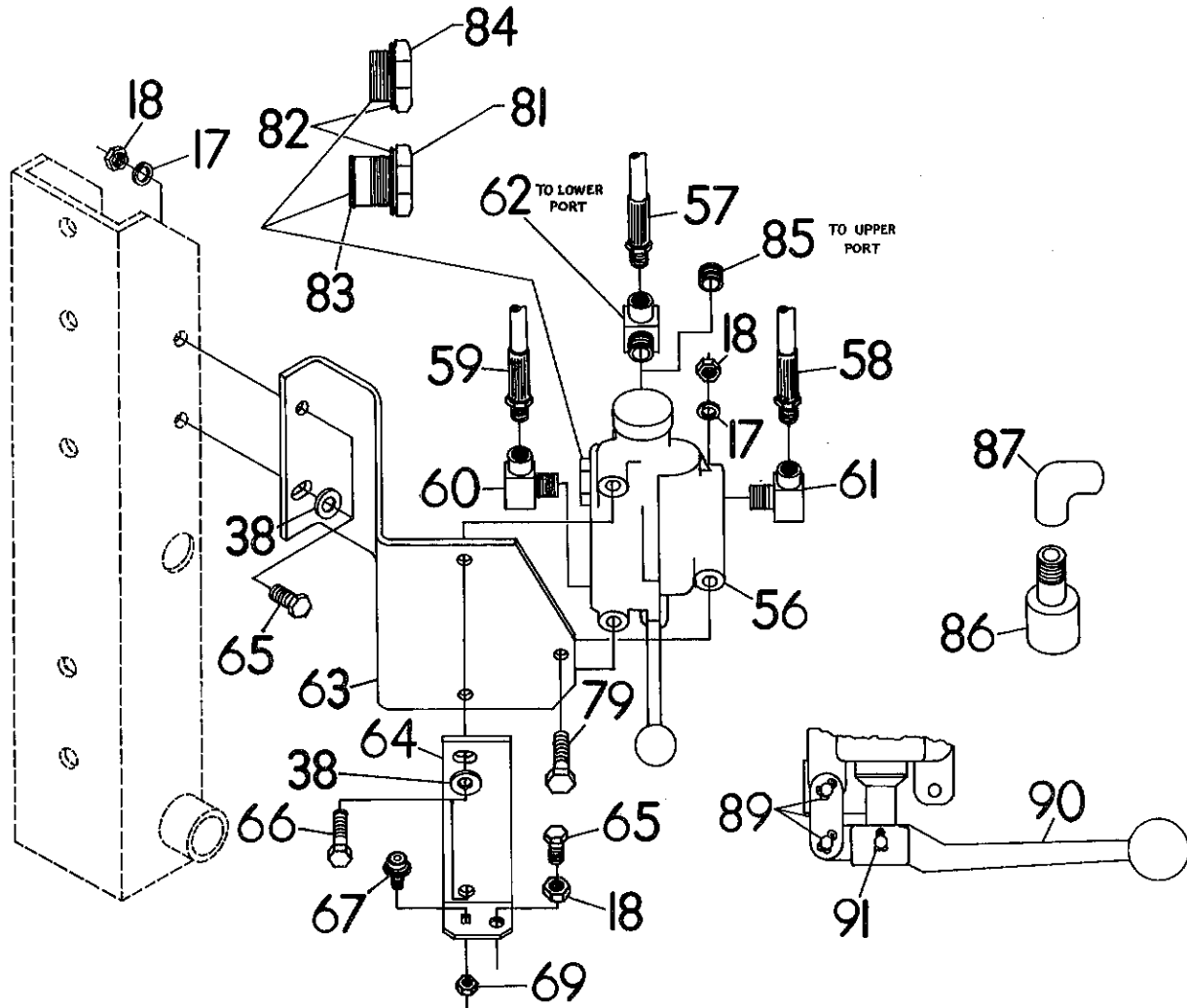
HPD-24 HYDRAULIC POST DRIVER PARTS DRAWING



HPD-24 PARTS LIST

| REF NO. | PART NO. | DESCRIPTION | NO. REQ. |
|---------|----------|--|----------|
| 1 | 814962 | Driving Ram (HPD-24) | 1 |
| 2 | 814551 | Channel Guide | 8 |
| 3 | 2504132 | Machinery Bushing, 18 Ga. 1" I.D. | Var. |
| 4 | 814970 | Spring Anchor Bracket | 1 |
| 5 | 2503145 | Bolt 1/2"-13NC x 1 1/2" Hex Head Gr. 5 | 2 |
| 6 | 2500039 | Nut 1/2"-13NC Hex Nylock | 2 |
| 7 | 814975 | Carriage Weldment (HPD-24) | 1 |
| | 814516 | Complete Cylinder Assembly (#8 thru #16) | 1 |
| 8 | 814517 | Tube, Hydraulic Cylinder | 1 |
| 9 | 814520 | Rod, Hydraulic Cylinder | 1 |
| 10 | 814422 | Guide, Hydraulic Cylinder Rod | 1 |
| 11 | 814538 | End Cap with Rod Seal | 1 |
| 12 | 814523 | Rod Seal (only) | 1 |
| 13 | 2500054 | Nut 1/2"-13NC Hex Stamplock | 7 |
| 14 | 814524 | Nut 1"-14NF Full Hex (Drilled & Tapped) | 1 |
| 15 | 2503196 | Set Screw 1/4"-20NC x 1/4" | 1 |
| 16 | 2500057 | Nut 1"-14NF Hex Nylock | 1 |
| 17 | 814426 | Bumper, Urethane | 4 |
| 18 | 2502008 | Washer 3/8" Springlock | 4 |
| 19 | 2500004 | Nut 3/8"-16NC Full Hex | 4 |
| 20 | 814980 | Transport Lock Bracket | 1 |
| 21 | 2503202 | Bolt 1/2"-13NC x 2 1/2" Hex Head Gr. 8 | 2 |
| | 814985 | Spring Assembly (#13,#22 thru #24) | 2 |
| 22 | 814990 | Spring, Driving Ram | 2 |
| 23 | 814986 | Spring Anchor Weldment | 4 |
| 24 | 814991 | Tube, Plastic Damper | 2 |
| 25 | 814993 | Guard, Rubber | 1 |
| 26 | 814994 | Retainer, Rubber Guard | 1 |
| 27 | 2503110 | Bolt 5/16"-18NC x 1" Carriage Head | 6 |
| 28 | 2501012 | Washer 5/16" Flat | 4 |
| 29 | 2502011 | Washer 5/16" Springlock | 6 |
| 30 | 2500011 | Nut 5/16"-18NC Full Hex | 6 |
| 31 | 814995 | Pin, Transport Lock | 1 |
| 32 | 590188 | Hair Clip Pin (AK-2705) | 1 |
| 33 | 814543 | Strap, Cylinder Stabilizer | 1 |
| 34 | 2502007 | Washer 5/8" Springlock | 5 |
| 35 | 2500013 | Nut 5/8"-11NC Full Hex | 5 |
| 36 | 101056 | Safety Sign-Safety Instructions | 1 |
| 37 | 101057 | Safety Sign-Warning (Set Brake Securely) | 1 |
| 38 | 101058 | Safety Sign-Warning (Avoid Serious Injury) | 1 |
| 39 | 101078 | Safety Sign-Caution (Safety Glasses) | 1 |
| 40 | 101027 | Safety Sign-Warning (Stand Clear) | 1 |
| 41 | 101079 | Safety Sign-Notice (1/2 Turn Loose) | 1 |
| 42 | 101080 | Safety Sign-Notice (1/2 Turn Loose) | 1 |
| 43 | SW700 | Safety Sign-Warning (High Pressure Fluid) | 1 |
| 44 | 814476 | Post Holder with Handle | 1 |
| 45 | 2504129 | Handle, Post Holder | 1 |

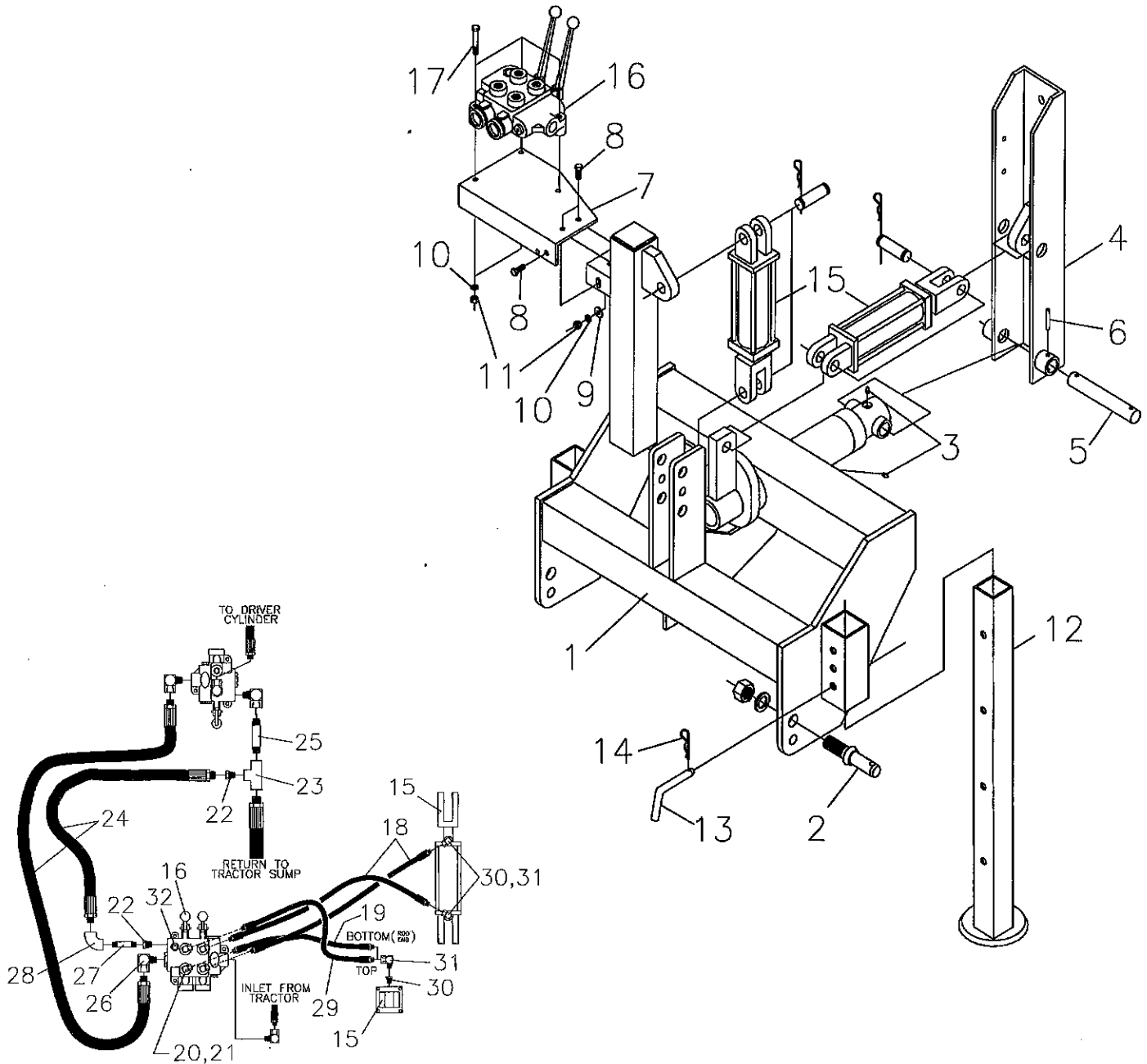
HYDRAULIC CONTROL VALVE AND MOUNTING BRACKET



| REF. NO. | PART NO. | DESCRIPTION | NO. REQ. |
|----------|----------|---|----------|
| 17 | 2502008 | Washer, $\frac{3}{8}$ " Springlock | 5 |
| 18 | 2500004 | Nut, $\frac{3}{8}$ " - 16 NC Full Hex | 6 |
| 38 | 2501004 | Washer, $\frac{3}{8}$ " Flat | 3 |
| 56 | 814473 | Valve, Hydraulic | 1 |
| 57 | 2504125 | Hose, Cylinder $\frac{3}{4}$ " I.D. x 24" Dbl. Braid | 1 |
| 58 | 2504126 | Hose, Pressure, $\frac{1}{2}$ " I.D. x 60" Dbl. Braid | 1 |
| 59 | 2504131 | Hose, Return, 1" I.D. x 96" Sngl. Braid | 1 |
| 60 | 2504128 | Elbow, Street, $\frac{3}{4}$ " NPT 90° | 1 |
| 61 | 2505503 | Elbow, Street, $\frac{1}{2}$ " to $\frac{3}{4}$ " NPT 90° | 1 |
| 62 | 2504180 | Elbow, 90° Swivel $\frac{1}{2}$ " | 1 |
| 63 | 814474 | Bracket, Valve Mount | 1 |
| 64 | 814475 | Stop, Valve Handle | 1 |
| 65 | 2503020 | Bolt, $\frac{3}{8}$ " - 16 NC x $1\frac{1}{4}$ " Hex Head | 3 |
| 66 | 2503072 | Bolt, $\frac{3}{8}$ " - 16 NC x 3" Hex Head Gr. 5 | 2 |
| 67 | 814489 | Level Assembly | 1 |
| 69 | 2500006 | Nut, $\frac{1}{4}$ " - 20 NC Nylock Hex | 1 |

| REF. NO. | PART NO. | DESCRIPTION | NO. REQ. |
|----------|----------|---|----------|
| 79 | 2503205 | Bolt, $\frac{3}{8}$ " - 16 NC x $2\frac{1}{2}$ " Hex Head Gr. 5 | 1 |
| 81 | 2504135 | Kit, Closed-Center Plug (Contains Items 82 and 83) | 1 |
| 82 | 2504136 | Seal, Hydraulic Valve Plug | 1 |
| 83 | 2504137 | Seal, Quad | 1 |
| 84 | 2504138 | Kit, Open-Center Plug (Contains Item 82) | 1 |
| 85 | 2504133 | Pipe Plug, $\frac{1}{2}$ " Socket Head | 1 |
| 86 | 814496 | Return Adapter | 1 |
| 87 | 2504139 | Elbow, 90° $\frac{3}{4}$ " NPT - Black Pipe | 1 |
| 89 | 814541 | Link Assembly, Handle (Side Plate, Link Pin & Cotter Pins) | 1 |
| 90 | 814593 | Handle, Valve | 1 |
| 91 | 814589 | Pin, Handle (Pin & Cotter Pin) | 1 |
| NS | 814552 | Spring To Center Kit (Valve) | 1 |
| NS | 814594 | Rubber Bonnet, Valve | 1 |

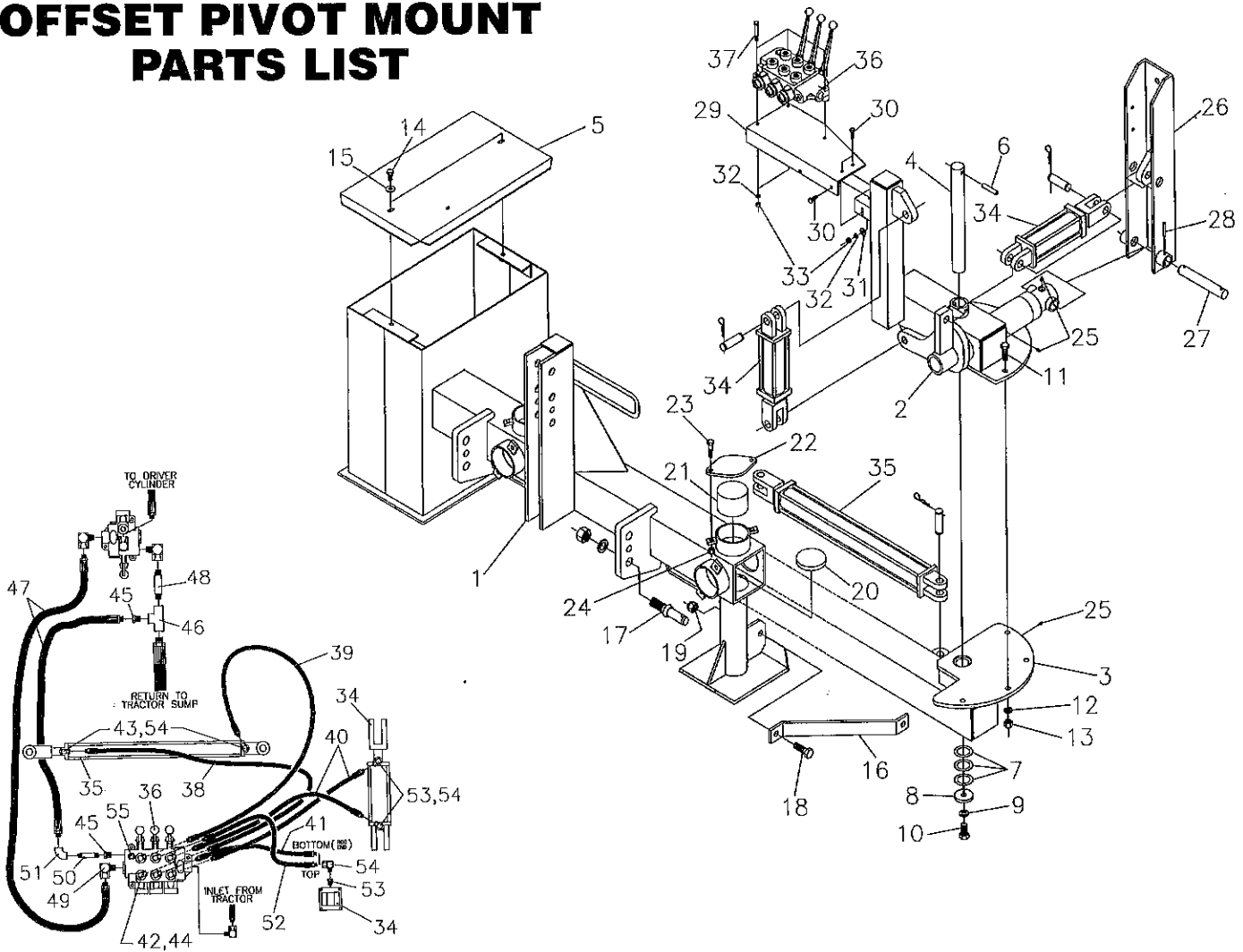
HYDRAULIC CENTER MOUNT PARTS LIST



| REF. NO. | PART NO. | DESCRIPTION | NO. REQ. |
|----------|----------|--|----------|
| 1 | 814695 | Center Mount Weldment | 1 |
| 2 | 590159 | Draw Pin (AK-4120) | 2 |
| 3 | 2504049 | Drive Zerk $\frac{3}{16}$ " | 2 |
| 4 | 814725 | Support Channel Weldment | 1 |
| 5 | 830334 | Lift Pin ($1\frac{1}{2}$ " x 8") | 1 |
| 6 | 2504070 | Roll Pin $\frac{3}{16}$ " x 2" | 1 |
| 7 | 814729 | Valve Mount | 1 |
| 8 | 2503011 | Bolt $\frac{3}{8}$ " - 16 NC x 1" Hex Head | 3 |
| 9 | 2501004 | Washer $\frac{3}{8}$ " Flat | 3 |
| 10 | 2502008 | Washer $\frac{3}{8}$ " Springlock | 6 |
| 11 | 2500004 | Nut $\frac{3}{8}$ " - 16 NC Full Hex | 6 |
| 12 | 814687 | Stand Weldment | 2 |
| 13 | 803637 | Adjustment Pin | 2 |
| 14 | 590187 | Hair Clip Pin (AK-2704) | 2 |
| 15 | 2504097 | Hydraulic Cylinder 3 x 6 | 2 |
| 16 | 814734 | Valve, 2-Spool | 1 |

| REF. NO. | PART NO. | DESCRIPTION | NO. REQ. |
|----------|----------|---|----------|
| 17 | 2503039 | Bolt $\frac{3}{8}$ " - 16 NC x $2\frac{1}{2}$ " Hex Head | 3 |
| 18 | 2505505 | Hydraulic Hose $\frac{1}{4}$ " I.D. x 36" | 2 |
| 19 | 2505506 | Hydraulic Hose $\frac{1}{4}$ " I.D. x 30" | 1 |
| 20 | 2505507 | Reducer Bushing $\frac{1}{2}$ " to $\frac{1}{4}$ " | 4 |
| 21 | 2505508 | 90° Street Elbow $\frac{1}{4}$ " NPT | 4 |
| 22 | 2504119 | Reducer Bushing $\frac{3}{4}$ " to $\frac{1}{2}$ " | 2 |
| 23 | 2505509 | Pipe Tee $\frac{3}{4}$ " | 1 |
| 24 | 2505516 | Hydraulic Hose $\frac{3}{8}$ " I.D. x 36" | 2 |
| 25 | 2505511 | Pipe Nipple $\frac{3}{4}$ " x 3" | 1 |
| 26 | 2505503 | 90° Street Elbow $\frac{3}{4}$ " to $\frac{1}{2}$ " | 1 |
| 27 | 2505512 | Pipe Nipple $\frac{1}{2}$ " x 2" | 1 |
| 28 | 2505513 | 90° Elbow $\frac{1}{2}$ " | 1 |
| 29 | 2505514 | Hydraulic Hose $\frac{1}{4}$ " I.D. x 24" | 1 |
| 30 | 2505515 | Reducer Bushing $\frac{1}{2}$ " to $\frac{1}{4}$ " with Orifice | 4 |
| 31 | 2505530 | 90° Swivel Elbow $\frac{1}{4}$ " NPT | 4 |
| 32 | 2505550 | Pipe Plug $\frac{3}{4}$ " NPT Sq. Head | 1 |

OFFSET PIVOT MOUNT PARTS LIST



| REF. NO. | PART NO. | DESCRIPTION | NO. REQ. |
|----------|----------|--|----------|
| 1 | 814880 | Offset Mount Base Weldment | 1 |
| 2 | 814870 | Telescoping Pivot Weldment | 1 |
| 3 | 814875 | Lower Pivot Weldment | 1 |
| 4 | 265083 | Pivot Pin 1 3/4" Dia. x 16" | 1 |
| 5 | 814889 | Weight Tank Lid | 1 |
| 6 | 2504195 | Roll Pin 1/2" x 2 1/2" | 1 |
| 7 | 2504202 | Machinery Bushing 1 3/4" I.D. x 18 Ga. | 3 |
| 8 | 265085 | Retainer, Hinge Pin | 1 |
| 9 | 2502001 | Washer 3/4" Springlock | 1 |
| 10 | 2503139 | Bolt 3/4" - 10 NC x 1 1/2" Hex Head | 1 |
| 11 | 2503152 | Bolt 5/8" - 11 NC x 2" Hex Head | 2 |
| 12 | 2502007 | Washer 5/8" Springlock | 2 |
| 13 | 2500013 | Nut 5/8" - 11 NC Full Hex | 2 |
| 14 | 2503062 | Bolt 1/2" - 13 NC x 1" Hex Head | 2 |
| 15 | 2501003 | Washer 1/2" Flat | 2 |
| 16 | 814671 | Strap, Safety Transport | 1 |
| 17 | 590159 | Draw Pin (AK-4120) | 2 |
| 18 | 2503002 | Bolt 3/4" - 10 NC x 2" Hex Head | 2 |
| 19 | 2500037 | Nut 3/4" - 10 NC Hex Nylock | 2 |
| 20 | 814745 | Wear Pad 4" Dia. x 9/16" | 4 |
| 21 | 814746 | Wear Pad 4" Dia. x 2 3/4" | 4 |
| 22 | 814747 | Plate, Wear Pad Retainer | 4 |
| 23 | 2503007 | Bolt 1/2" - 13 NC x 2" Hex Head | 8 |
| 24 | 2500050 | Nut 1/2" - 13 NC Hex Jam Nylock | 8 |
| 25 | 2504049 | Drive Zerk 5/16" | 3 |
| 26 | 814725 | Support Channel Weldment | 1 |
| 27 | 830334 | Lift Pin 1 1/4" x 8" | 1 |
| 28 | 2504070 | Roll Pin 5/16" x 2" | 1 |

| REF. NO. | PART NO. | DESCRIPTION | NO. REQ. |
|----------|----------|--|----------|
| 29 | 814753 | Mount, 3-Spool Valve | 1 |
| 30 | 2503020 | Bolt 3/8" - 16 NC x 1 1/4" Hex Head | 3 |
| 31 | 2501004 | Washer 3/8" Flat | 3 |
| 32 | 2502008 | Washer 3/8" Springlock | 6 |
| 33 | 2500004 | Nut 3/8" - 16 NC Full Hex | 6 |
| 34 | 2504097 | Hydraulic Cylinder 3 x 6 | 2 |
| 35 | 2504120 | Hydraulic Cylinder 2 x 24 | 1 |
| 36 | 814754 | 3-Spool Valve | 1 |
| 37 | 2503039 | Bolt 3/8" - 16 NC x 2 1/2" Hex Head | 3 |
| 38 | 2505537 | Hydraulic Hose 1/4" I.D. x 96" | 1 |
| 39 | 2505533 | Hydraulic Hose 1/4" I.D. x 72" | 1 |
| 40 | 2505505 | Hydraulic Hose 1/4" I.D. x 36" | 2 |
| 41 | 2505506 | Hydraulic Hose 1/4" I.D. x 30" | 1 |
| 42 | 2505507 | Reducer Bushing 1/2" to 1/4" | 6 |
| 43 | 2505517 | Reducer Bushing 3/8" to 1/4" | 2 |
| 44 | 2505508 | Elbow, 90° Street - 1/4" NPT | 6 |
| 45 | 2504119 | Reducer Fitting 3/4" to 1/2" NPT | 2 |
| 46 | 2505509 | Pipe Tee 3/4" NPT | 1 |
| 47 | 2505510 | Hydraulic Hose 3/8" I.D. x 48" | 2 |
| 48 | 2505511 | Pipe Nipple 3/4" x 3" | 1 |
| 49 | 2505503 | Street Elbow 3/4" to 1/2" | 1 |
| 50 | 2505512 | Pipe Nipple 1/2" x 2" | 1 |
| 51 | 2505513 | 90° Elbow 1/2" NPT | 1 |
| 52 | 2505514 | Hydraulic Hose 1/4" I.D. x 24" | 1 |
| 53 | 2505515 | Reducer Bushing 1/2" to 1/4" w/.040" Orifice | 4 |
| 54 | 2505530 | 90° Swivel Elbow 1/4" - 18 NPT | 6 |
| 55 | 2505550 | Pipe Plug 3/4" NPT Sq. Head | 1 |